

82

6 chambers, szerokość profilu 81 mm

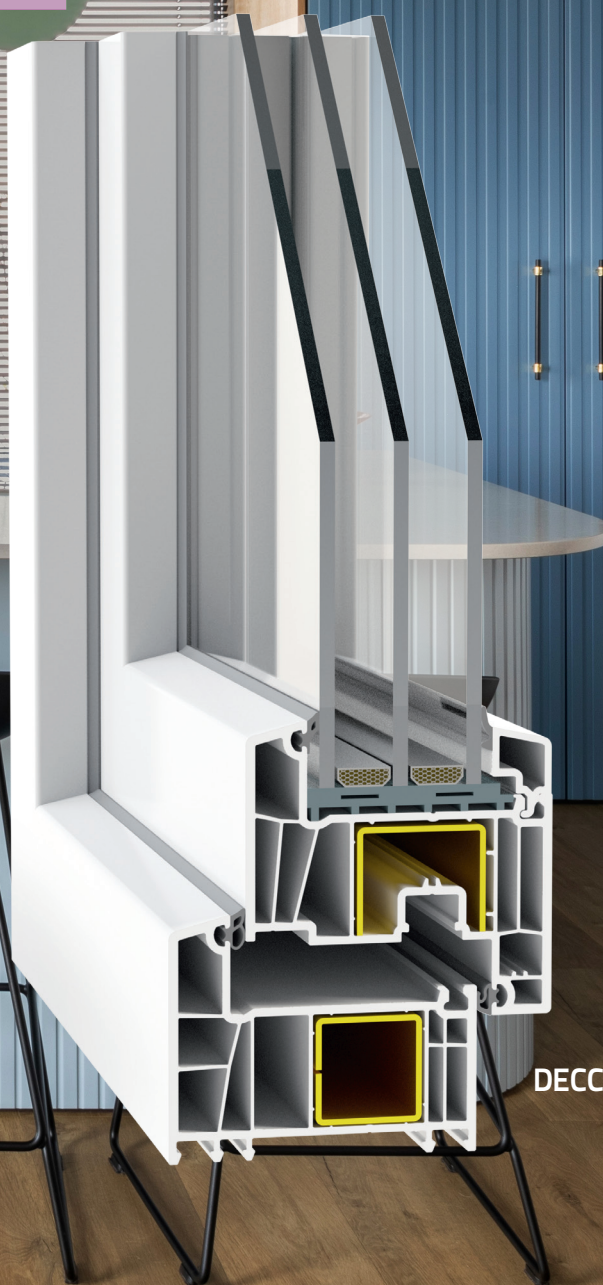
Decco 82 profile sets the latest trends in the window industry. Modern ascetic design provides windows with a unique character. The product has universal properties. It enables application of a wide range of glass packages - from standard to thickest, from basic to special: warm, soundproof and safe.

The profile is characterized by its width and stability.

0,76 $\frac{U_w}{W/m^2K}$

* for the reference window width 1,230 mm, height 1480 mm with, lass package of 48 mm / Ug=0.5W/m²K and spacer bar Swisspacer V

decco[®]
E X T R U S I O N



DECCO 82

www.decco.eu

84 MD

AMERICAN SYSTEMS

SHUTTERS

62

71

82

83

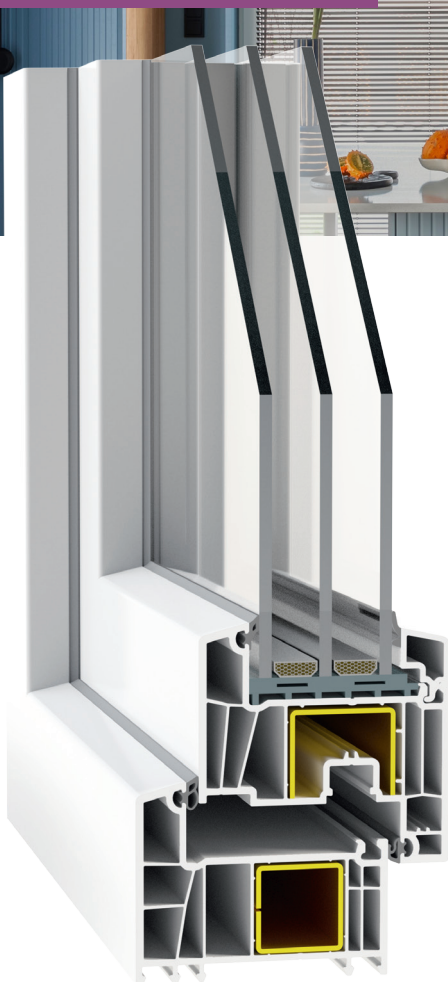
EURO+

HST

SLIDE

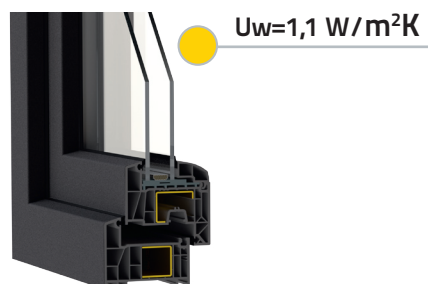
65

AQUATHERM



- 6-chamber system with the installation width of 81 mm
- Possibility of application of many kinds of glass packages with the thickness from 23 mm to 54.8 mm!
- Grey or black gaskets
- Wide range of decorative films.
- Extended reinforcement chambers to increase window stiffness and enable execution of all correctly designed structures
- Four colours of core offered: white, caramel, anthracite and dark brown.
- Contains complete door system
- Optimum profile assembly height providing up to 5% more light in comparison with other systems in the same class (in two-leaf window) with the dimensions of: width 1,465 mm height 1,435 mm)
- B class profiles in accordance with the standard PN-EN 12608: -1:2016- 1:2016-04 Perfect thermal insulation. $U_w = 0.77 \text{ W/m}^2\text{K}$ for the reference window
- Production technology developed together by Decco engineers and world leader in manufacturing tools, Greiner
- In this system it is possible to apply the technology of pasted panes, which enables creation of oversize structures.
- Possibility of application of polystyrene insert

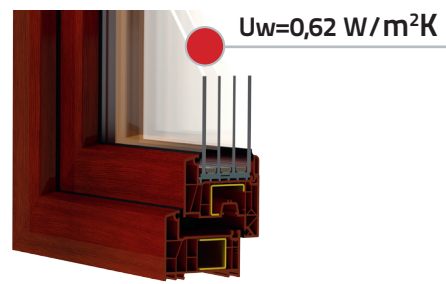
2-glass package
24 mm $U_g 1,0/\text{Wm}^2\text{K}$
spacer bar Swisspacer V, argon



3-glass package
48 mm $U_g 0,5/\text{Wm}^2\text{K}$
spacer bar Swisspacer V, argon



4-glass package
52 mm $U_g 0,3/\text{Wm}^2\text{K}$
spacer bar Swisspacer Ultimate, krypton



Profile available in a wide range of colour and wood-imitating veneers



Colours close to original due to print technology

and many others

$$U_w = 0,76 [\text{W/m}^2\text{K}]^*$$

*for the reference window width 1,230 mm, height 1480 mm with, lass package of 48 mm / $U_g = 0.5 \text{ W/m}^2\text{K}$ and spacer bar Swisspacer V